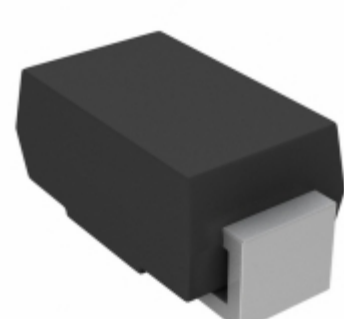


## SMAJ7.0CAHE3/61



**Part Number:** [SMAJ7.0CAHE3/61](#)  
**Manufacturer:** [Electro-Films \(EFI\) / Vishay](#)  
**Description:** TVS DIODE 7V 12V DO214AC  
**Data sheet:** [PDF SMAJ5.0A-SMAJ188CA Series](#)

**RoHS Status:** Lead free / RoHS Compliant  
**Ship From:** Hong Kong  
**Shipment Way:** DHL/Fedex/TNT/UPS/EMS

Images are for reference only.  
 See Product Specifications for product details.  
 Buy SMAJ7.0CAHE3/61 with confidence from  
 Component-World.HK, 1 Year Warranty

[Request For Quotation](#)

### PRODUCT PARAMETER

<b>Part Number</b>	SMAJ7.0CAHE3/61	<b>Manufacturer</b>	<a href="#">Electro-Films (EFI) / Vishay</a>
<b>Description</b>	TVS DIODE 7V 12V DO214AC	<b>Lead Free Status / RoHS Status</b>	Lead free / RoHS Compliant
<b>Quantity Available</b>	450811 pcs	<b>Data sheet</b>	<a href="#">SMAJ5.0A-SMAJ188CA Series</a>
<b>Category</b>	<a href="#">Circuit Protection</a>	<b>Voltage - Reverse Standoff (Typ)</b>	7V
<b>Voltage - Clamping (Max) @ 1pp</b>	12V	<b>Voltage - Breakdown (Min)</b>	7.78V
<b>Type</b>	Zener	<b>Supplier Device Package</b>	DO-214AC (SMA)
<b>Series</b>	Automotive, AEC-Q101, TransZorb®	<b>Power Line Protection</b>	No
<b>Power - Peak Pulse</b>	400W	<b>Packaging</b>	Tape & Reel (TR)
<b>Package / Case</b>	DO-214AC, SMA	<b>Operating Temperature</b>	-55°C ~ 150°C (TJ)
<b>Mounting Type</b>	Surface Mount	<b>Moisture Sensitivity Level (MSL)</b>	1 (Unlimited)
<b>Lead Free Status / RoHS Status</b>	Lead free / RoHS Compliant	<b>Current - Peak Pulse (10/1000µs)</b>	33.3A
<b>Capacitance @ Frequency</b>	-	<b>Bidirectional Channels</b>	1
<b>Base Part Number</b>	SMAJ	<b>Applications</b>	Automotive

Component-World.com is a Reliable Stocking Distributor of Electronic Components. We specialize in all Electro-Films (EFI) / Vishay series electronic components. We have 450811 pieces of Electro-Films (EFI) / Vishay SMAJ7.0CAHE3/61 in stock available now. Request a quote from electronics components distributor at Component-World.com, our sales team will contact you within 24 hours.  
 RFQ Email: [info@Components-World.com](mailto:info@Components-World.com)

### RELATED PRODUCTS

	<b>Part#:</b> <a href="#">SMAJ7.5-E3/5A</a> <b>Description:</b> TVS DIODE 7.5V 14.3V DO214AC	<b>Manufacturers:</b> <a href="#">Electro-Films (EFI) / Vishay</a>	<a href="#">RFQ</a>
	<b>Part#:</b> <a href="#">SMAJ7.0CA-13</a> <b>Description:</b> TVS DIODE 7V 12V SMA	<b>Manufacturers:</b> <a href="#">Diodes Incorporated</a>	<a href="#">RFQ</a>
	<b>Part#:</b> <a href="#">SMAJ7.0CA-TP</a> <b>Description:</b> TVS DIODE 7V 12V DO214AC	<b>Manufacturers:</b> <a href="#">Micro Commercial Components (MCC)</a>	<a href="#">RFQ</a>
	<b>Part#:</b> <a href="#">SMAJ7.0CAHM2G</a> <b>Description:</b> TVS DIODE 7V 12V DO214AC	<b>Manufacturers:</b> <a href="#">TSC (Taiwan Semiconductor)</a>	<a href="#">RFQ</a>
	<b>Part#:</b> <a href="#">SMAJ7.0CA-13-F</a> <b>Description:</b> TVS DIODE 7V 12V SMA	<b>Manufacturers:</b> <a href="#">Diodes Incorporated</a>	<a href="#">RFQ</a>
	<b>Part#:</b> <a href="#">SMAJ7.0CA R3G</a> <b>Description:</b> TVS DIODE 7V 12V DO214AC	<b>Manufacturers:</b> <a href="#">TSC (Taiwan Semiconductor)</a>	<a href="#">RFQ</a>
	<b>Part#:</b> <a href="#">SMAJ7.0CE3/TR13</a> <b>Description:</b> TVS DIODE 7V 13.3V DO214AC	<b>Manufacturers:</b> <a href="#">Microsemi</a>	<a href="#">RFQ</a>
	<b>Part#:</b> <a href="#">SMAJ7.0CAHR3G</a> <b>Description:</b> TVS DIODE 7V 12V DO214AC	<b>Manufacturers:</b> <a href="#">TSC (Taiwan Semiconductor)</a>	<a href="#">RFQ</a>
	<b>Part#:</b> <a href="#">SMAJ7.0CATR</a> <b>Description:</b> TVS DIODE 7V 12V SMA	<b>Manufacturers:</b> <a href="#">Sensitron Semiconductor / SMC Diode Solutions</a>	<a href="#">RFQ</a>
	<b>Part#:</b> <a href="#">SMAJ7.0CA-M3/5A</a> <b>Description:</b> TVS DIODE 7V 12V DO214AC	<b>Manufacturers:</b> <a href="#">Electro-Films (EFI) / Vishay</a>	<a href="#">RFQ</a>
	<b>Part#:</b> <a href="#">SMAJ7.0CA-M3/61</a> <b>Description:</b> TVS DIODE 7V 12V DO214AC	<b>Manufacturers:</b> <a href="#">Electro-Films (EFI) / Vishay</a>	<a href="#">RFQ</a>
	<b>Part#:</b> <a href="#">SMAJ7.5-E3/61</a> <b>Description:</b> TVS DIODE 7.5V 14.3V DO214AC	<b>Manufacturers:</b> <a href="#">Electro-Films (EFI) / Vishay</a>	<a href="#">RFQ</a>
	<b>Part#:</b> <a href="#">SMAJ7.5A</a> <b>Description:</b> TVS DIODE 7.5V 12.9V SMA	<b>Manufacturers:</b> <a href="#">Bourns, Inc.</a>	<a href="#">RFQ</a>
	<b>Part#:</b> <a href="#">SMAJ7.5A</a> <b>Description:</b> TVS DIODE 7.5V 12.9V DO214AC	<b>Manufacturers:</b> <a href="#">Hamlin / Littelfuse</a>	<a href="#">RFQ</a>
	<b>Part#:</b> <a href="#">SMAJ7.0CAE3/TR13</a> <b>Description:</b> TVS DIODE 7V 12V DO214AC	<b>Manufacturers:</b> <a href="#">Microsemi</a>	<a href="#">RFQ</a>
	<b>Part#:</b> <a href="#">SMAJ7.0CAHE3/5A</a> <b>Description:</b> TVS DIODE 7V 12V DO214AC	<b>Manufacturers:</b> <a href="#">Electro-Films (EFI) / Vishay</a>	<a href="#">RFQ</a>
	<b>Part#:</b> <a href="#">SMAJ7.5</a> <b>Description:</b> TVS DIODE 7.5V 13.55V DO214AC	<b>Manufacturers:</b> <a href="#">Hamlin / Littelfuse</a>	<a href="#">RFQ</a>
	<b>Part#:</b> <a href="#">SMAJ7.0E3/TR13</a> <b>Description:</b> TVS DIODE 7V 13.3V DO214AC	<b>Manufacturers:</b> <a href="#">Microsemi</a>	<a href="#">RFQ</a>
	<b>Part#:</b> <a href="#">SMAJ7.0CA-E3/5A</a> <b>Description:</b> TVS DIODE 7V 12V DO214AC	<b>Manufacturers:</b> <a href="#">Electro-Films (EFI) / Vishay</a>	<a href="#">RFQ</a>
	<b>Part#:</b> <a href="#">SMAJ7.0CA-E3/61</a> <b>Description:</b> TVS DIODE 7V 12V DO214AC	<b>Manufacturers:</b> <a href="#">Electro-Films (EFI) / Vishay</a>	<a href="#">RFQ</a>

### Related keywords for SMAJ7.0CAHE3/61

<a href="#">Electro-Films (EFI) / Vishay SMAJ7.0CAHE3/61</a>	<a href="#">SMAJ7.0CAHE3/61 distributor</a>	<a href="#">SMAJ7.0CAHE3/61 supplier</a>	<a href="#">SMAJ7.0CAHE3/61 price</a>
<a href="#">SMAJ7.0CAHE3/61 download datasheet</a>	<a href="#">SMAJ7.0CAHE3/61 datasheet</a>	<a href="#">SMAJ7.0CAHE3/61 stock</a>	<a href="#">buy SMAJ7.0CAHE3/61</a>
<a href="#">Electro-Films (EFI) / Vishay SMAJ7.0CAHE3/61</a>	<a href="#">Electro-Films (EFI) / Vishay SMAJ7.0CAHE3/61</a>	<a href="#">Vishay Electro-Films SMAJ7.0CAHE3/61</a>	<a href="#">Phoenix Passive Components / Vishay SMAJ7.0CAHE3/61</a>